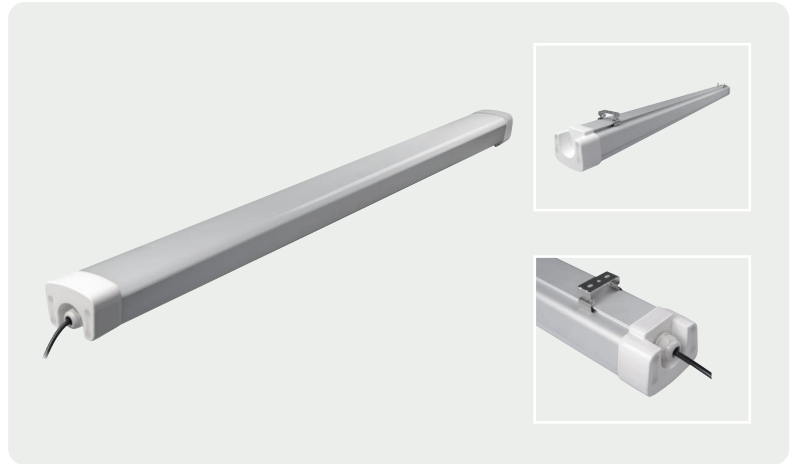


INDUSTRIAL / Tri-Proof Lighting

# LED Tri-Proof Batten

WHY-SL134 Series

An aluminium-profile LED tri-proof batten rated IP65 for dust, water, and corrosion resistance, covering 20W to 80W at 14LM/W. LEFORD/Beko certified driver, premium 2835 large-chip LEDs, and a tool-free snap-lock installation buckle provide reliable, long-life performance in wet, dusty, and temperature-variable environments. Optional 5.8 GHz microwave sensing and emergency battery backup extend its suitability to safety-critical and energy-managed installations.



## KEY FEATURES



### Aluminium Extrusion Profile Housing

Extruded aluminium base provides superior corrosion resistance and efficient heat dissipation, ensuring stable long-term operation across the full power range.



### IP65 Tri-Proof Protection

Full IP65 dust and water ingress rating delivers reliable waterproof, dustproof, and corrosion-resistant protection in humid, dusty, and chemically aggressive environments.



### LEFORD / Beko Certified Driver

LEFORD or Beko isolation-certified power supply paired with premium 2835 large-chip LEDs provides dual-layer protection for extended fixture service life.



### Opalescent PC Diffuser (280% Transmittance)

High-transmittance opalescent PC diffuser achieves > 80% light transmittance, producing soft, uniform illumination with effective glare reduction.



### Highlighted chip LED beads

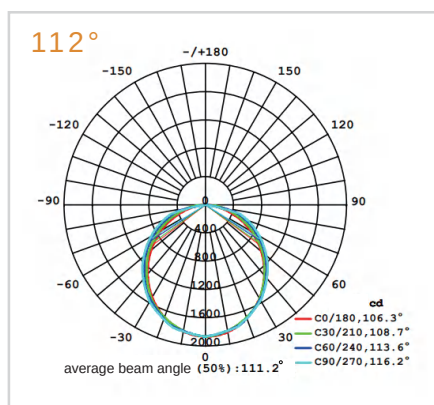
Equipped with high-brightness 2835 large chip LED beads, it boasts sufficient brightness, low light decay, and long-lasting stable lighting effects.



### microwave Sensing Emergency Options

Optional 5.8 GHz microwave sensing, switch sensing, and dimming sensing for intelligent occupancy control. Emergency backup available in 3W/3H, 5W/3H, and 12W/2H configurations with lithium or nickel-cadmium battery.

## BEAM DISTRIBUTION



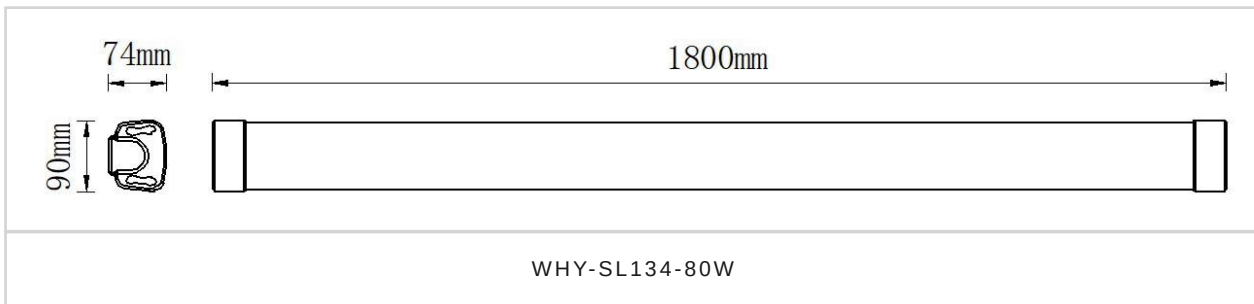
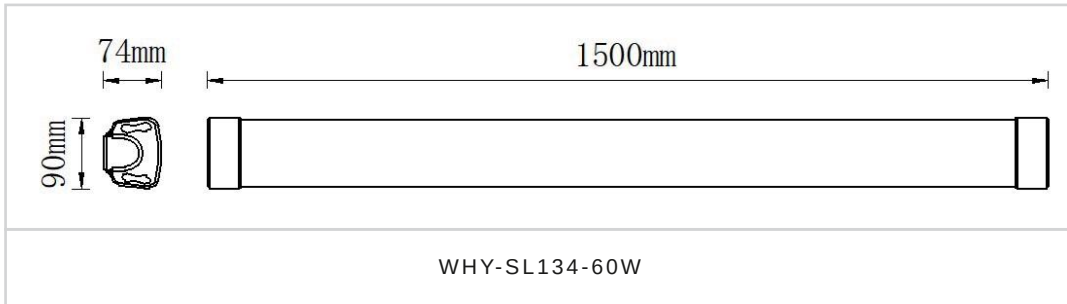
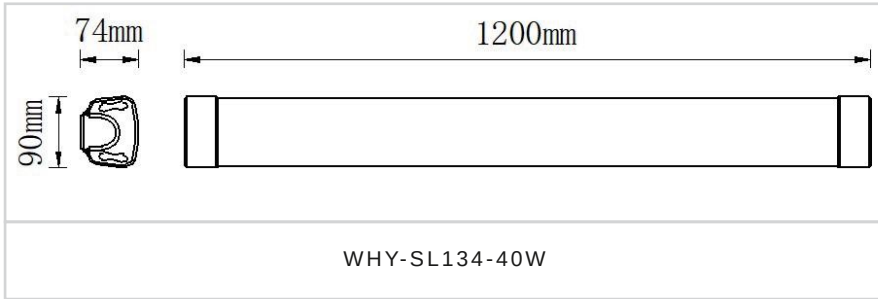
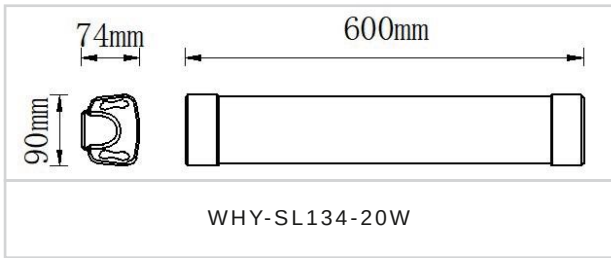
MODEL VARIANTS

Mode	Wattage	Luminous Efficacy	Size
WHY-SL134-20W	20W	140lm/W	90*74*600mm
WHY-SL134-40W	40W	140lm/W	90*74*1200mm
WHY-SL134-60W	60W	140lm/W	90*74*1500mm
WHY-SL134-80W	80W	140lm/W	90*74*1800mm

TECHNICAL SPECIFICATIONS

CCT	3000K/4000K/5000K/6000K/6500K
CRI	CRI>80
Lamp body material	Aluminum profile
Induction function	5.8GHz microwave sensing/switch sensing/ dimming sensing (optional)
Emergency function	3W3H/5W3H/12W2H lithium battery/nickel-cadmium battery (optional)
Input Voltage	220~240V
LED lifespan	≥50000Hours
Power Factor	>0.5 / >0.9
Operating Temperature	-20 C ~ +35 C
IP Level	IP65

DIMENSION (MM)



APPLICATION PLACES

Cold storage

Gas stations

Factory floors

Parking lots

Office buildings

Shopping malls

Supermarkets

Schools

Hospitals

Municipal

Hotel

Homes