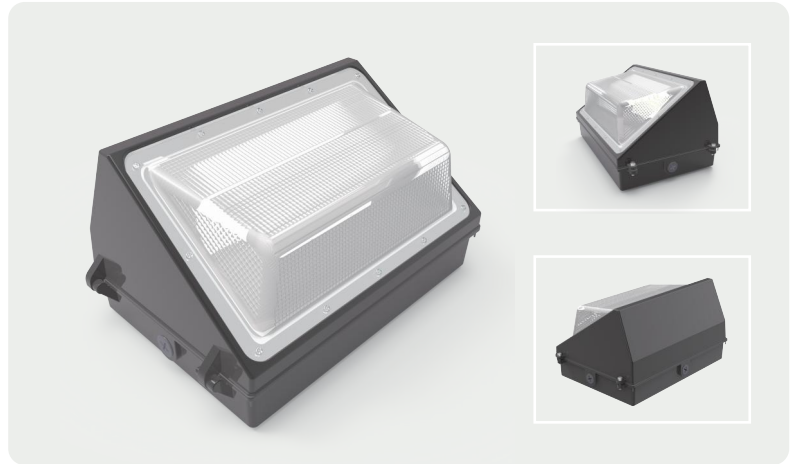


INDUSTRIAL / Wall Pack Light







LED Wall Pack Light

WHY-WP5 Series

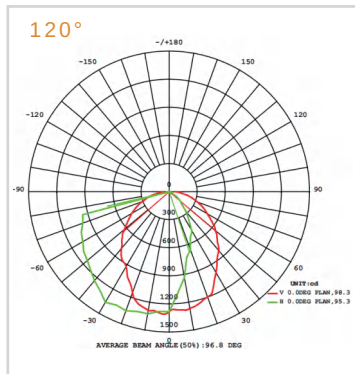
A robust LED wall pack luminaire designed for exterior building-mounted applications. Housed in a sandblasted ADC12 die-cast aluminium body with IP65-rated silicone sealing, it delivers 130 lm/W efficacy across six power configurations from 30W to 120W. With a rated lifespan of 100,000 hours and universal 100-277 VAC input, the WHY-WP5 is engineered for reliable, low-maintenance performance across a wide range of commercial and institutional settings.



KEY FEATURES

 <p>Universal Voltage Compatibility Accepts 100-277 VAC at 50/60Hz, making the WHY-WP5 suitable for global deployment across varied power supply infrastructures.</p>	 <p>Stable, Flicker-Free Driver High power factor(>0.9) and low total harmonic distortion (THD) drive delivers consistent, flicker-free output for reliable, comfortable illumination.</p>	 <p>5-Year Warranty Backed by a comprehensive 5-year warranty, covering all power ratings from 30W to 120W.</p>
 <p>High-Efficiency Output Achieves 130LM/W system efficacy, delivering significant long-term energy savings without compromising light quality.</p>	 <p>Die-Cast Aluminum Housing ADC12 sand-blasted aluminium construction provides antistatic, high-temperature, and corrosion-resistant performance with strong weathering resistance for outdoor use.</p>	 <p>Moisture-Proof Sealing Silicone gasket sealing effectively prevents moisture and water ingress, extending the service life of the fixture in humid or exposed environments.</p>

BEAM DISTRIBUTION



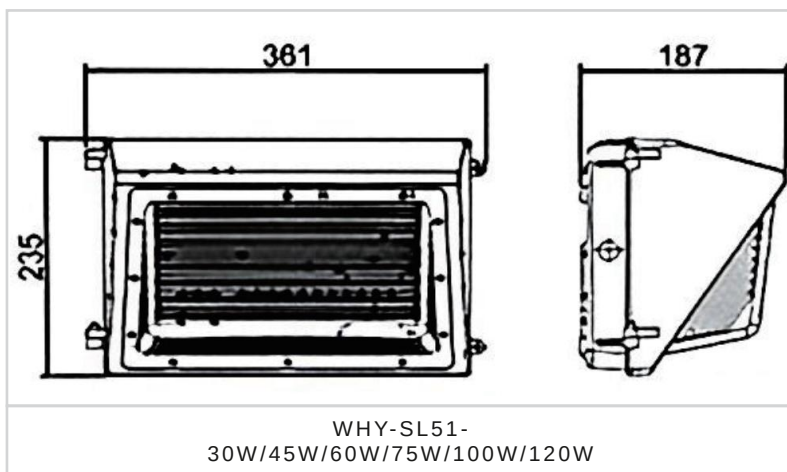
MODEL VARIANTS

Mode	Wattage	Luminous Efficacy	Size
WHY-WP5-30W	30W	130lm/W	361*235*187mm
WHY-WP5-45W	45W	130lm/W	361*235*187mm
WHY-WP5-60W	60W	130lm/W	361*235*187mm
WHY-WP5-75W	75W	130lm/W	361*235*187mm
WHY-WP5-100W	100W	130lm/W	361*235*187mm
WHY-WP5-120W	120W	130lm/W	361*235*187mm

TECHNICAL SPECIFICATIONS

CCT	3000K/4000K/5000K/5700K/6500K
CRI	Ra≥70 (Ra≥80 optional)
Input Voltage	100-277VAC
Housing Color	Brown
Housing Material	Aluminum(ADC12), PC
Lens	120°
Operating Temperature	-35°C to +55°C
IP Level	IP65
Lifespan	100,000 hours
Warranty	5years

DIMENSION (MM)



APPLICATION PLACES

Airport

Schools

Hotels

Exhibition

Residence